



■ Features :

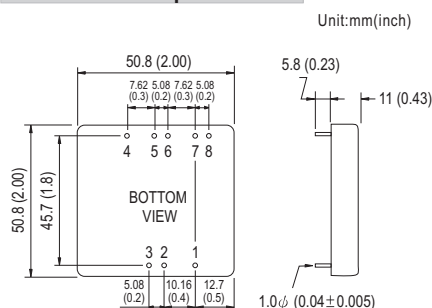
- 2"x2" compact size
- 2:1 wide input range
- High efficiency up to 93%
- 1500VDC I/O isolation
- Built-in remote ON / OFF control
- Built-in remote sense
- Trimming output  $\pm 10\%$
- Comply with CE / FCC without external components
- Protections: Short circuit / Overload / Input and output Over voltage
- Cooling by free air convection
- Six-sided shield metal case
- 100% burn-in test
- Low cost / High reliability
- Output 3.3V available
- 2 years warranty



SPECIFICATION

ORDER NO.	SKA60A-05	SKA60B-05	SKA60C-05	SKA60A-12	SKA60B-12	SKA60C-12	SKA60A-15	SKA60B-15	SKA60C-15			
OUTPUT	DC VOLTAGE			12V			15V					
	CURRENT RANGE			0.5 ~ 5A			0.4 ~ 4A					
	RATED POWER											
	RIPPLE & NOISE (max.) Note.2			80mVp-p			100mVp-p					
	LINE REGULATION Note.3											
	LOAD REGULATION Note.4											
	VOLTAGE ACCURACY											
	SWITCHING FREQUENCY											
	EXTERNAL CAPACITANCE LOAD (max.)			220uF			100uF					
EXTERNAL TRIM Adj. RANGE(Typ.)												
INPUT	VOLTAGE RANGE											
	EFFICIENCY (Typ.)											
	DC CURRENT	Full load		5505mA	2775mA	1370mA	5445mA	2715mA	1370mA	5400mA	2690mA	1370mA
		No load		185mA	120mA	60mA	160mA	120mA	60mA	160mA	120mA	85mA
	FILTER											
	REMOTE CONTROL											
PROTECTION												
PROTECTION (Note. 5)	OVER CURRENT											
	SHORT CIRCUIT											
	OVER VOLTAGE	Input(Typ.) A: >20 ~ 25VDC B: >40 ~ 50VDC C: >80 ~ 100VDC input voltage Protection type : Shut down o/p voltage, recovers automatically after fault condition is removed										
Output(Typ.) 5Vo : 7V ~ 8.95V ; 12Vo : 15V ~ 19.2V ; 15Vo : 18V ~ 23.3V Protection type : Clamp by TVS diode												
ENVIRONMENT	WORKING TEMP.											
	CASE TEMP.											
	WORKING HUMIDITY											
	STORAGE TEMP., HUMIDITY											
	TEMP. COEFFICIENT											
SAFETY & EMC	WITHSTAND VOLTAGE											
	ISOLATION RESISTANCE											
EMC EMISSION	Compliance to EN55022 Class A, FCC part 15 Class A without external components											
	EMC IMMUNITY											
OTHERS	DIMENSION											
	WEIGHT											

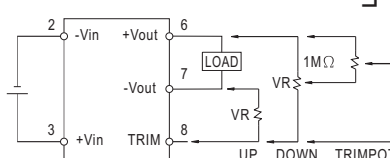
■ Mechanical Specification



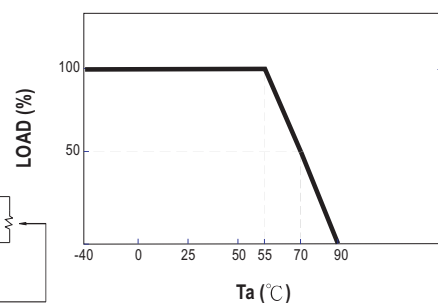
■ Pin Configuration

Pin No.	Output	Pin No.	Output
1	R.C	5	+R.S
2	-Vin	6	+Vout
3	+Vin	7	-Vout
4	-R.S	8	TRIM

■ External Output Trimming



■ Derating Curve



NOTE

- 1.All parameters are specified at normal input, rated load, 25°C, 70% RH ambient.
- 2.Ripple & noise are measured at 20MHz by using a 12" twisted pair terminated with a 0.1uf & 47uf capacitor.
- 3.Line regulation is measured from low line to high line at rated load.
- 4.Load regulation is measured from 10% to 100% rated load.
- 5.Please prevent the converter from operating in overload or short circuit condition for more than 30 seconds.